

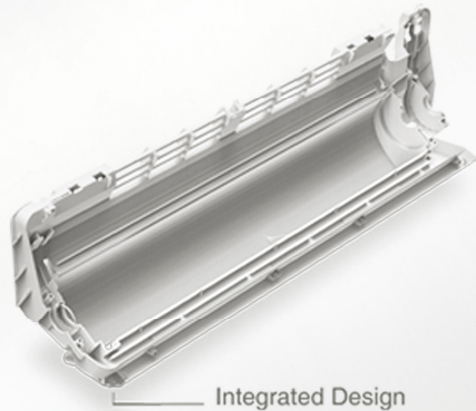
Neola split



Neola split

Integrative Design

Base pan and air outlet pan assembly adopt integrated design for easy installation and maintenance.



New Integrated Structure



Conventional Structure

Features

- Auto Restart Function
- Sleep Mode
- Cold Catalyst Filter
- Louver Position Memory Function
- Refrigerant Leakage Detect
- Temp Compensation
- Two-direction Air Vane

Specifications_Neola Series

| Model No. | MS11D-09HRDN1 | MS11D-12HRDN1 | MS11D-18HRDN1 | MS11D-24HRDN1 | |
|-------------------------------------|-------------------|--------------------|--------------------|--------------------|--------------------|
| Cooling Capacity | Btu/h | 8500(2250~10000) | 11000(2450~13500) | 17000(5100~22000) | 23000(12000~25000) |
| | kW | 2.5(0.7~2.9) | 3.2(0.7~4.0) | 5.0(1.5~6.4) | 6.7(3.5~7.3) |
| Heating Capacity | Btu/h | 9500(2300~11000) | 12500(2800~16000) | 17000(5300~23000) | 24000(11000~27000) |
| | kW | 2.8(0.7~3.2) | 3.6(0.8~4.6) | 5.0(1.5~6.7) | 7.0(3.2~7.9) |
| Power Supply | V~,Hz,Ph | 220-240V~,50Hz,1Ph | 220-240V~,50Hz,1Ph | 220-240V~,50Hz,1Ph | 220-240V~,50Hz,1Ph |
| Power Input (W) | Cooling | 770(180~1100) | 1000(210~1380) | 1550(380~2000) | 2100(820~2500) |
| | Heating | 770(170~1050) | 1010(210~1480) | 1380(350~2000) | 1950(800~2700) |
| Operating Current (A) | Cooling | 3.4(0.9~4.8) | 4.4(1.0~6.2) | 6.9(1.8~10.2) | 9.4(3.6~11.2) |
| | Heating | 3.4(0.8~4.6) | 4.5(1.0~6.6) | 6.2(1.6~9.0) | 8.5(3.5~12.0) |
| EER (W/W) | W/W | 3.21 | 3.22 | 3.21 | 3.21 |
| COP (W/W) | W/W | 3.62 | 3.63 | 3.61 | 3.61 |
| Air Flow Volume (m ³ /h) | Indoor | 530/430/390 | 630/550/420 | 850/750/550 | 1200/1100/900 |
| | Indoor(Hi/Med/Lo) | 36/30/28 | 38/35/28 | 43/39/33 | 47/45/39 |
| Noise Level (dB(A)) | Outdoor | 55 | 55 | 56 | 59 |
| | Indoor (W×H×D) | 680×255×178 | 770×255×188 | 905×275×198 | 1030×315×218 |
| Net Dimension (mm) | Outdoor (W×H×D) | 700×540×240 | 780×540×250 | 760×590×285 | 845×700×320 |
| | Indoor/Outdoor | 7/26.5 | 7.5/28 | 9/37.5 | 12/49.5 |
| Net Weight (kg) | Indoor (W×H×D) | 745×330×255 | 835×330×265 | 970×345×270 | 1115×395×300 |
| | Outdoor (W×H×D) | 815×580×325 | 910×585×335 | 887×645×355 | 965×755×395 |
| Gross Weight (kg) | Indoor/Outdoor | 8/28 | 9.5/30 | 11.5/39 | 15/52.5 |
| | Liquid | Φ6.35 (1/4) | Φ6.35 (1/4) | Φ6.35 (1/4) | Φ9.53 (3/8) |
| Piping Size (mm(inch)) | Gas | Φ9.52 (3/8) | Φ9.52 (3/8) | Φ12.7 (1/2) | Φ15.9(5/8) |
| | Refrigerant | R410a | R410a | R410a | R410a |

1.The above design and specifications are subject to change of product improvement without prior notice .
2.The noise level data reflects the level in anechoic chamber .

Dealer Details: